

# Neutral Ground

for chamber orchestra

Brooke Joyce (2008)

## INSTRUMENTATION

2 Flutes (1st doubles Piccolo)

2 Oboes

2 Bb Clarinets

2 Bassoons

2 F Horns

2 C Trumpets (straight and cup mutes)

Trombone (straight mute)

3 Percussionists

(one on-stage, two off-stage: 3 Bass Drums, 3 Log Drums, Marimba (low A),  
Glockenspiel, Triangle)

Piano

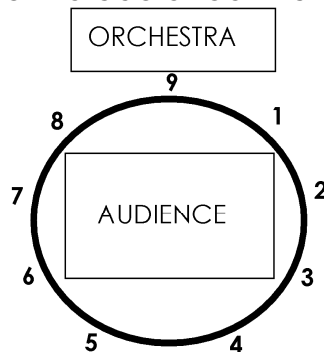
Strings

Off-Stage Handbell Choir (9 players, 1 bell each)

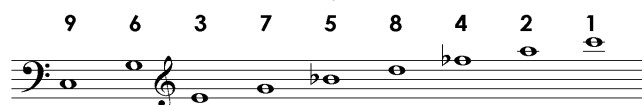
## NOTES

One percussionist plays in the back of the orchestra, the other two are in the sides and/or back of the hall, surrounding the audience. The off-stage players each play bass drum and log drum.

The handbell players rest until the final minute of the piece. They are arranged around the audience in a circle:



At m. 262, each player enters, ringing their bell either 3 or 6 times at the given rate. Only the first note should be coordinated; each subsequent note should be timed according to each individual player's "internal clock." Preferably, melody chimes should be used in place of English handbells. Required handbell pitches:



Score in C. Piccolo sounds octave lower; Contrabass harmonics sound in the octave where they are notated.

# Neutral Ground

Brooke Joyce (2008)  
for chamber orchestra

Resolutely ♩ = 96

The score is for a chamber orchestra in 4/4 time, marked "Resolutely" with a tempo of ♩ = 96. The instruments are arranged in the following order from top to bottom:

- Flute 1/2 (Piccolo)
- Oboe 1/2
- Bb Clarinet 1/2
- Bassoon 1/2
- F Horn 1/2
- C Trumpet 1/2
- Trombone
- Percussion I (log drum, bass drum)
- Percussion II (off-stage)
- Percussion III (off-stage)
- Piano
- Violin I
- Violin II
- Viola
- Cello
- Contrabass

The first three measures are mostly rests for all instruments. In measure 4, the Percussion I, II, and III parts begin with a half note on the second line of the staff, marked *sffz*. In measure 5, the Percussion I and II parts continue with a quarter note on the second line, also marked *sffz*. In measure 6, the Percussion I and II parts continue with a quarter note on the second line, marked *sffz*. In measure 7, the Percussion I and II parts continue with a quarter note on the second line, marked *pp*. In measure 8, the Percussion I and II parts continue with a quarter note on the second line, marked *pp*. The Percussion III part begins in measure 4 with a half note on the second line, marked *sffz*. In measure 5, the Percussion III part continues with a quarter note on the second line, marked *sffz*. In measure 6, the Percussion III part continues with a quarter note on the second line, marked *sffz*. In measure 7, the Percussion III part continues with a quarter note on the second line, marked *pp*. In measure 8, the Percussion III part continues with a quarter note on the second line, marked *pp*.

8

Perc. I

Perc. II

Perc. III

*sfz*

*pp*

*sfz*

*pp*

*sfz*

*pp*

3

Fl. 1/2  
Ob. 1/2  
Cl. 1/2  
Bsn. 1/2  
Hn. 1/2  
Tpt. 1/2  
Tbn.  
Perc. I  
Perc. II  
Perc. III  
Vln. I  
Vln. II  
Vla.  
Vc.  
Cb.

3. *ff* \* play notated rhythm as fast as possible, repeat continuously

17

Fl. 1/2

Musical score for Flute 1/2, Oboe 1/2, Clarinet 1/2, and Bassoon 1/2. The score is written in treble clef with a key signature of one flat (B-flat). It features dynamic markings of *pp*, *ff*, and *p*. A large '6' and '4' are placed above the staves, indicating a 6/4 time signature change. The woodwinds play a rhythmic pattern of eighth and sixteenth notes.

Hr. 1/2

Musical score for Horn 1/2 and Trombone 1/2. The Horn part is in treble clef, and the Trombone part is in bass clef. Both parts feature dynamic markings of *ff*, *p*, and *sfz*. A large '6' and '4' are placed above the staves, indicating a 6/4 time signature change. The horns and trombones play sustained chords.

Tpt. 1/2

Musical score for Trumpet 1/2. The part is in treble clef and features dynamic markings of *ff*, *p*, and *sfz*. A large '6' and '4' are placed above the staff, indicating a 6/4 time signature change. The trumpet plays sustained chords.

Perc. I

Musical score for Percussion I. The part features a triplet of eighth notes marked *p* and *ff*. A large '6' and '4' are placed above the staff, indicating a 6/4 time signature change. The percussionist plays a rhythmic pattern.

Perc. II

Musical score for Percussion II. The part features a triplet of eighth notes marked *p* and *ff*. A large '6' and '4' are placed above the staff, indicating a 6/4 time signature change. The percussionist plays a rhythmic pattern.

Perc. III

Musical score for Percussion III. The part features a triplet of eighth notes marked *p* and *ff*. A large '6' and '4' are placed above the staff, indicating a 6/4 time signature change. The percussionist plays a rhythmic pattern.

Vln. I

Musical score for Violin I. The part is in treble clef and features dynamic markings of *p* and *ff*. A large '6' and '4' are placed above the staff, indicating a 6/4 time signature change. The violin plays sustained chords.

Vln. II

Musical score for Violin II. The part is in treble clef and features dynamic markings of *p* and *ff*. A large '6' and '4' are placed above the staff, indicating a 6/4 time signature change. The violin plays sustained chords.

Vla.

Musical score for Viola. The part is in alto clef and features dynamic markings of *p* and *ff*. A large '6' and '4' are placed above the staff, indicating a 6/4 time signature change. The viola plays sustained chords.

Vc.

Musical score for Violoncello. The part is in bass clef and features dynamic markings of *p* and *ff*. A large '6' and '4' are placed above the staff, indicating a 6/4 time signature change. The cello plays sustained chords.

Cb.

Musical score for Contrabass. The part is in bass clef and features dynamic markings of *p* and *ff*. A large '6' and '4' are placed above the staff, indicating a 6/4 time signature change. The contrabass plays sustained chords.

Fl. 1/2  
Ob. 1/2  
Cl. 1/2  
Bsn. 1/2  
Hn. 1/2  
Tpt. 1/2  
Tbn.  
Perc. I  
Perc. II  
Perc. III  
Vln. I  
Vln. II  
Vla.  
Vc.  
Cb.

*mf* *f* *f*  
*sfz* *mf* *f* *f*  
*sfz* *mf* *f* *mf*  
*sfz* *mf* *f* *mf*  
*p* *ff* *ff* *mf*  
*p* *ff* *mf*  
*p* *ff* *mf*  
*p* *ff* *mf*

3  
3  
5

Fl. 1/2  
 Ob. 1/2  
 Cl. 1/2  
 Bsn. 1/2  
 Hn. 1/2  
 Tpt. 1/2  
 Tbn.  
 Perc. I  
 Perc. II  
 Perc. III  
 Vln. I  
 Vln. II  
 Vla.  
 Vc.  
 Cb.

*sfz* *p* *f* *sfz* *sfz*

3  
4  
3  
4  
3  
4  
3  
4



28

Fl. 1/2  
 Ob. 1/2  
 Cl. 1/2  
 Bsn. 1/2  
 Hn. 1/2  
 Tpt. 1/2  
 Tbn.  
 Perc. I  
 Perc. II  
 Perc. III  
 Vln. I  
 Vln. II  
 Vla.  
 Vc.  
 Cb.

*f* *f* *f* *f* *f* *f* *f* *f* *f* *f* *f* *f* *f* *f* *f* *f*  
*sfp* *sfp* *sfp* *sfp* *sfp* *sfp* *sfp* *sfp* *sfp* *sfp* *sfp* *sfp* *sfp* *sfp* *sfp* *sfp*

31

Fl. 1/2  
 Ob. 1/2  
 Cl. 1/2  
 Bsn. 1/2  
 Hn. 1/2  
 Tpt. 1/2  
 Tbn.  
 Perc. I  
 Perc. II  
 Perc. III  
 Vln. I  
 Vln. II  
 Vla.  
 Vc.  
 Cb.

*ff sfz sfz sfp*

*ff sfz sfz sfp*

*ff sfz sfz sfp*

*ff sfz sfz sfp*

*ff sfz sfz sfp*

*ff sfz sfz sfp*

*ff sfz sfz sfp*

*cresc.*  
*cresc.*  
*cresc.*

3 4 4 4 3 4 3 4

34

Fl. 1/2  
Ob. 1/2  
Cl. 1/2  
Bsn. 1/2  
Hn. 1/2  
Tpt. 1/2  
Tbn.  
Perc. I  
Perc. II  
Perc. III  
Vln. I  
Vln. II  
Vla.  
Vc.

*ff*  
*ff*  
*ff*  
*ff*  
*ff*  
*ff* straight mute in  
*ff* straight mute in  
*ff*  
*ff*  
*f*  
*mp*  
*ff*  
*f*  
*mp*  
*ff*  
*f*  
*mp*  
*ff*  
*mf*  
*p*  
*ppp*  
*ff*  
*mf*  
*p*  
*ppp*  
*ff*  
*mf*  
*p*  
*ppp*  
*ff*  
*mf*  
*ppp*

(= d.)  
(= d.)  
(= d.)  
(= d.)

9. *mf* *ppp*